

Contents

Value Position	6
How It Works	7
Configuration Steps - Extreme Products and Cloudi-Fi solution	8
List of Products Used/Tested (with Software/Firmware Levels)	9
Support Contact Information Partner	9
Terms and Conditons of Use	10
Revision History	11

Extreme Networks Solutions Selling: Ecosystem Integration Configuration Template

Abstract:

This document has been created for the use of Extreme Networks and Partners. The primary purpose of this document is to serve as step by step configuration guide for 3rd party integrations with Extreme Networks products.

Process:

The Ecosystem partner is responsible for completing the Ecosystem Integration Configuration Template & Integration Tech Brief documents and submit back to Extreme Networks for validation. Once approved Extreme Networks will release the finalized Solution Brief & Configuration Guide for joint marketing. It is the responsibility of the Ecosystem partner to test annually against latest products and software/firmware levels in order to maintain approvals for publication. Self-publication including but not limited to use of Extreme Networks logos on documents or websites without written approval from Extreme Networks is not allowed.

For additional information on Extreme Networks trademarks, see www.extremenetworks.com/company/legal/trademarks.

Published:

November 2019

Product Integration

The integration between the Extreme Networks portfolio and the Cloudi-Fi solution allows customers to benefit from a compliant, secure and personalized Guest Wi-Fi Captive portal that provides access to digital services.

Solution Summary

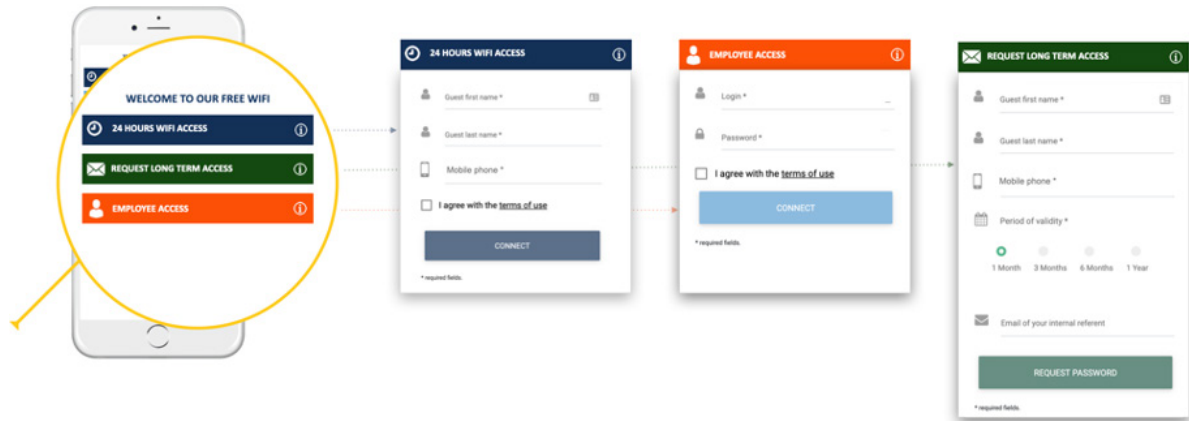
Cloudi-Fi is 100% cloud-based Guest Wi-Fi SaaS solution that transforms Wi-Fi access into a new communication channel with the guarantee to be secure and compliant with local regulation laws.

Our solution helps you drive both enterprises and hotspots digital transformation through innovative digital services.

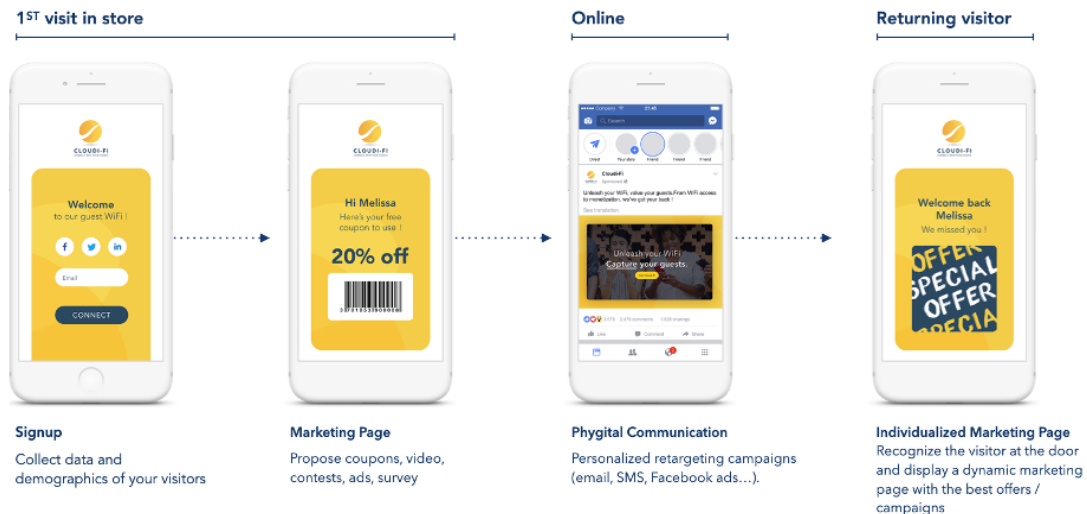


We address **Corporate and Hotspots market segments**.

We address **Corporate market segment** and transform the Wi-Fi into a new way to connect and access the enterprise resources. We profile the different type of user to adapt and propose a personalized Wi-Fi usage.



We also address Hotspots market segment to deliver a unique user digital experience. We reconcile the digital user experience with the physical presence onsite thanks to our phygital omni-channel communication.



Value Position

Cloudi-Fi is 100% cloud-based Guest Wi-Fi SaaS solution that transforms Wi-Fi access into a new communication channel. Our solution helps you drive both enterprises and hotspots digital transformation through innovative digital services.

We address 3 main concerns in our solution

1. User experience

- Provide the best user experience
- Collect digital identity and track user behaviour with their consent
- Tailored and automated communication based on user recognition Monetizable

2. Compliance

- Provide compliance based on each country specific regulations.
- In the EU and APAC region, data must be kept and the guest identified.
- However, in China, Russia and the Middle East data privacy must be enforced.

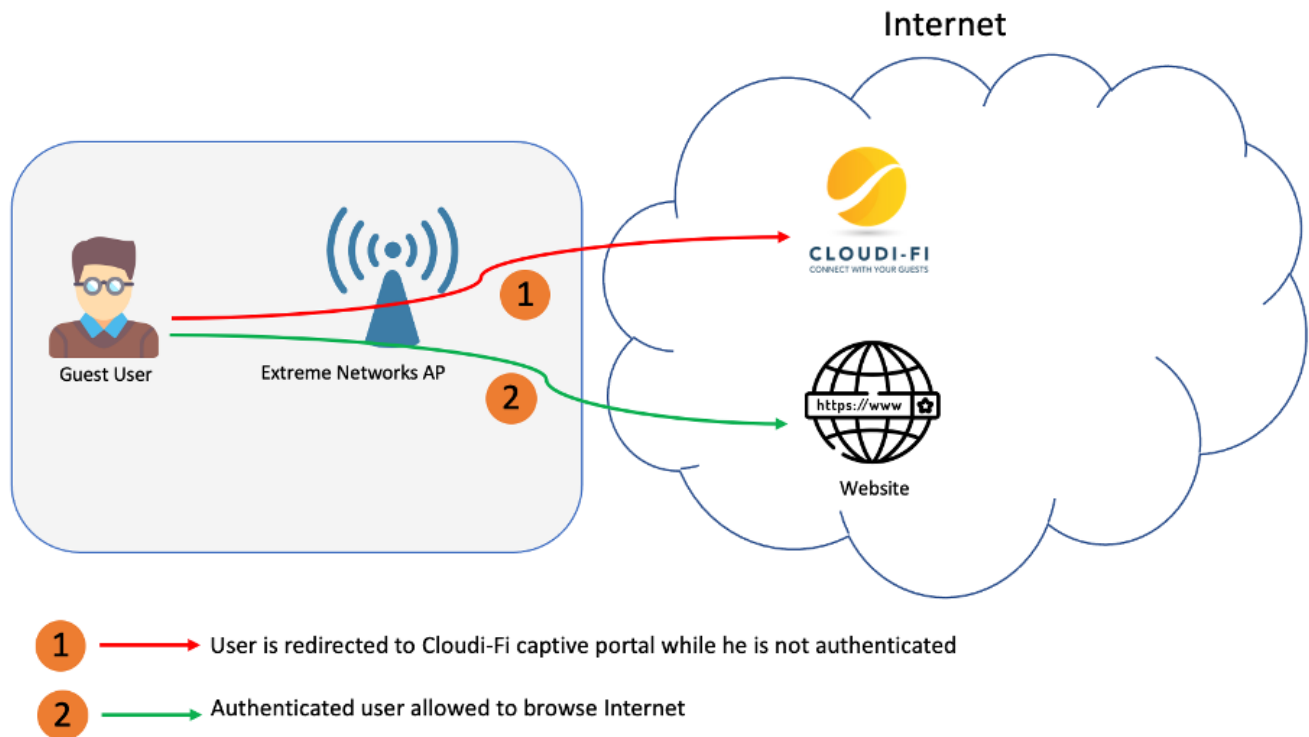
3. Security

- Brands are sensitive to their image. They require to have a minimum of security on their guest network.
- We are able to package Extreme Networks security offering.

Our positioning is to be the Global Cloud Wi-Fi platform.



How It Works



The above diagram shows the Cloudi-Fi integration into the Extreme Networks ecosystem.

First (1) the Guest connects to Internet through an open SSID configured on the Extreme Networks AP.

A splash page or captive portal pops up immediately on the device and is redirected to the Cloudi-Fi portal while they is not authenticated.

Cloudi-Fi hosts the captive portal, handles guest authentication and manages the access logs.

The guest is invited to authenticate with their preferred method.

Once authenticated (2), the user is allowed to browse Internet.

Information is also available here: <http://help.cloudi-fi.net/en/?q=extremenetworks>

Configuration Steps – Extreme Products and Cloudi-Fi solution

Information is also available here:

<http://help.cloudi-fi.net/en/?q=extremenetworks>

How to enable Cloudi-Fi hotspot in your ExtremeNetworks WiNG infrastructure, without Radius server:

<http://help.cloudi-fi.net/en/articles/4603828-extreme-networks-wing-enable-cloudi-fi-hotspot-without-radius>

How to enable Cloudi-Fi in your ExtremeNetworks CloudiQ infrastructure (with Aerohive access points):

<http://help.cloudi-fi.net/en/articles/4528584-extreme-networks-cloudiq-aerohive-deployment>

How to enable the forward of guest's web access logs to Cloudi-Fi for the compliance on ExtremeNetworks CloudIQ (Aerohive): <http://help.cloudi-fi.net/en/articles/4591297-extreme-networks-cloudiq-enable-cloudi-fi-log-storage-for-legal-compliance>

How to configure your Extreme CloudiQ Guest SSID to avoid the visitor to be redirected on the splash page after a period of inactivity: <http://help.cloudi-fi.net/en/articles/4597234-extreme-networks-cloudiq-aerohive-avoid-visitor-to-be-redirected-on-the-splash-page-after-30min-inactivity>

List of Products Used/Tested (with Software/Firmware Levels)

Here is the list of products tested by our customer success team:

- ExtremeCloud IQ:
 - Hardware : Aerohive-150W
 - Firmware : 10.0.9.1 (10.0r9a)
- Extreme WiNG:
 - OS WiNG 5.9
 - OS WiNG 7.5.1

Revision History

Date	Revision	Changes Made	Author
Dec. 20	1	Creation of the document	Cloudi-Fi



<http://www.extremenetworks.com/contact>

©2021 Extreme Networks, Inc. All rights reserved. Extreme Networks and the Extreme Networks logo are trademarks or registered trademarks of Extreme Networks, Inc. in the United States and/or other countries. All other names are the property of their respective owners. For additional information on Extreme Networks Trademarks please see <http://www.extremenetworks.com/company/legal/trademarks>. Specifications and product availability are subject to change without notice. 38568-0521-21

Support Contact Information – Partner

Our support mail is: support@cloudi-fi.com

Terms and Condition of Use

Extreme Networks, Inc. reserves all rights to its materials and the content of the materials. No material provided by Extreme Networks, Inc. to a Partner (or Customer, etc.) may be reproduced or transmitted in any form or by any means, electronic or mechanical, including photocopying and recording, or by any information storage or retrieval system, or incorporated into any other published work, except for internal use by the Partner and except as may be expressly permitted in writing by Extreme Networks, Inc.

This document and the information contained herein are intended solely for informational use. Extreme Networks, Inc. makes no representations or warranties of any kind, whether expressed or implied, with respect to this information and assumes no responsibility for its accuracy or completeness. Extreme Networks, Inc. hereby disclaims all liability and warranty for any information contained herein and all the material and information herein exists to be used only on an “as is” basis. More specific information may be available on request. By your review and/or use of the information contained herein, you expressly release Extreme from any and all liability related in any way to this information. A copy of the text of this section is an uncontrolled copy, and may lack important information or contain factual errors. All information herein is Copyright ©Extreme Networks, Inc. All rights reserved. All information contain in this document is subject to change without notice.

For additional information refer to:

<http://www.extremenetworks.com/company/legal/terms/>